

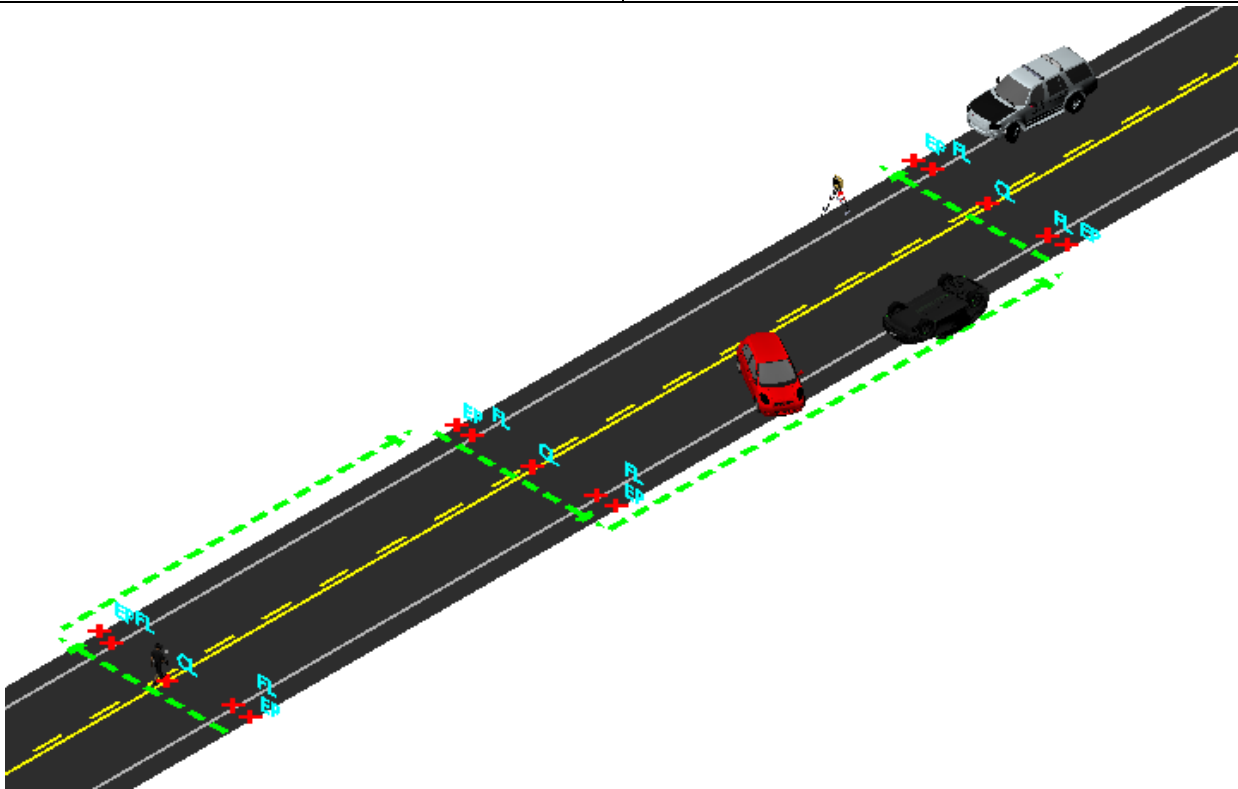


IMS EvidenceRecorder

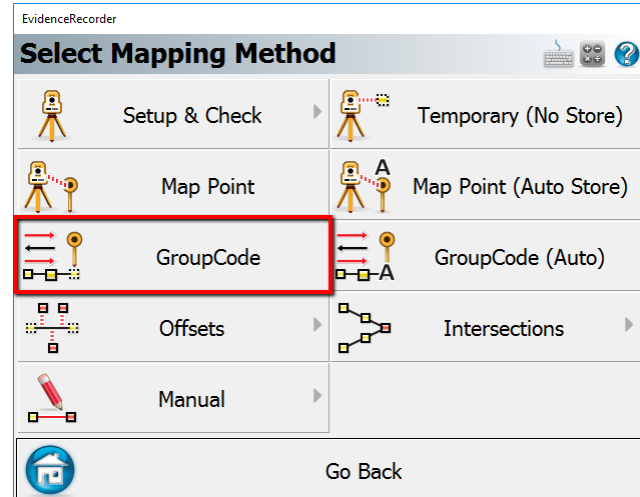
Evidence Recorder Quick Start Guide:

This Workflow Guide outlines the recommended procedure for collecting Group Codes.

Use Group codes to collect road lines efficiently:

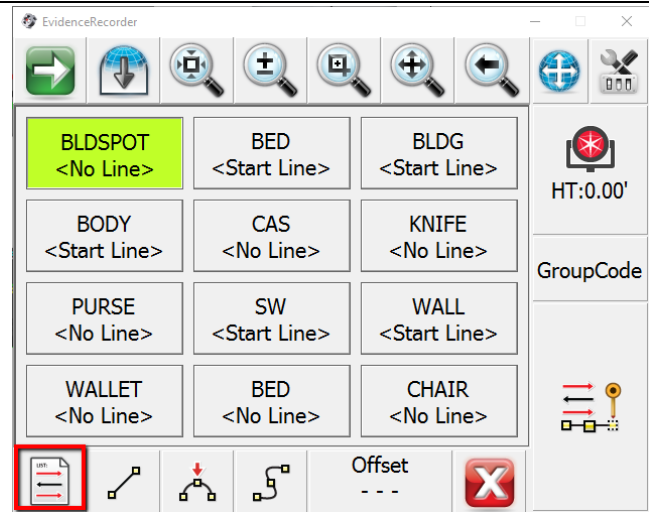


1. While you're mapping, select "Group Codes" from your Measure mode Button:

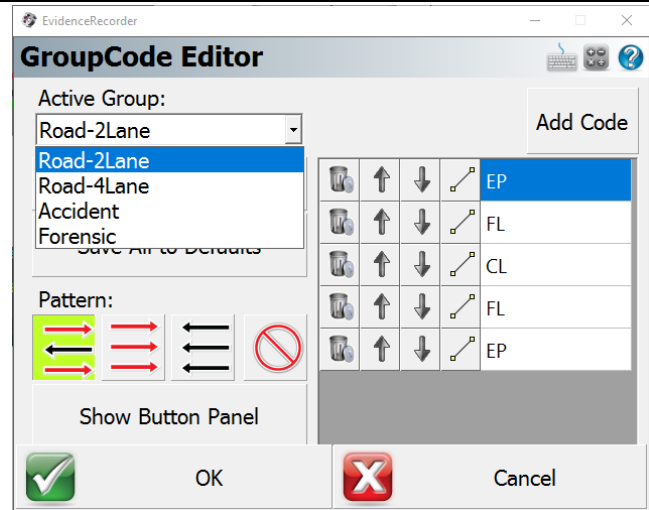




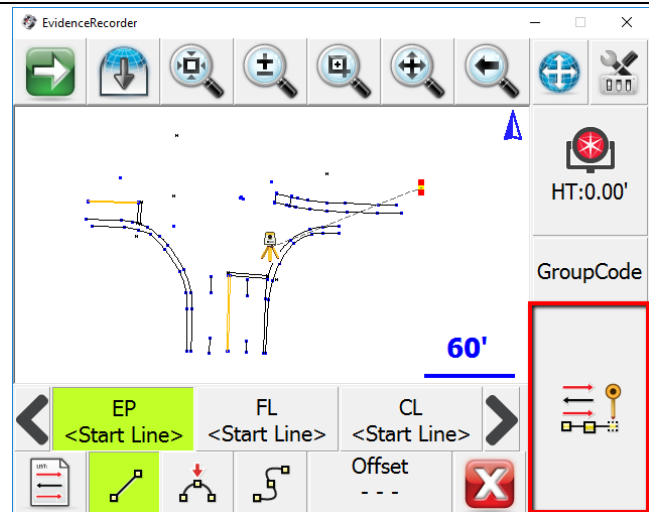
2. Pick the Groupcodes button



3. Select "Road 2 Lane."
4. Pick "OK"



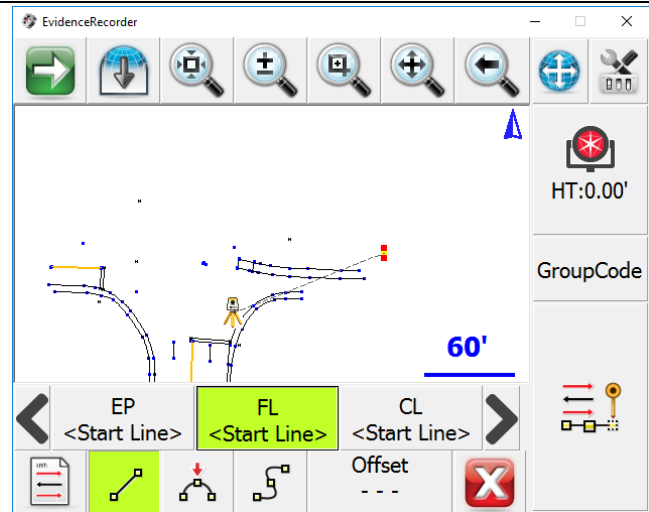
5. Move to the start of your EP figure and measure:



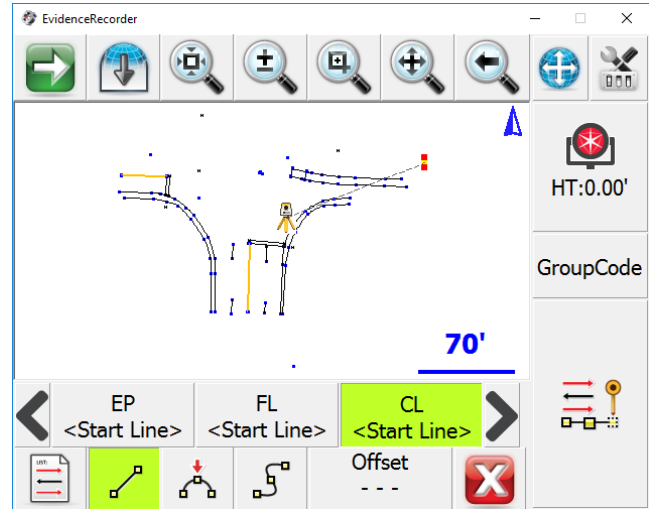
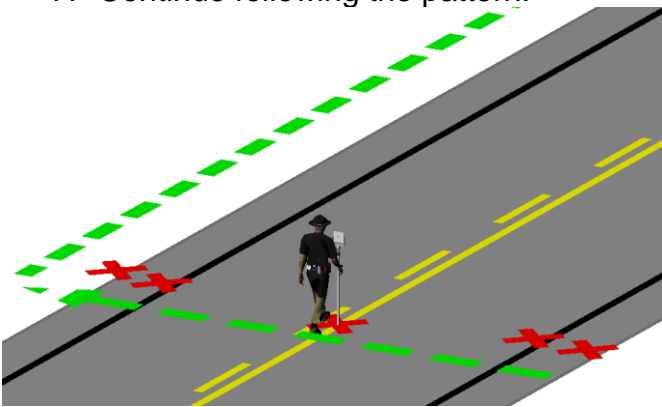


IMS EvidenceRecorder

6. Move to the fogline, note how the description has advanced in the carousel view:



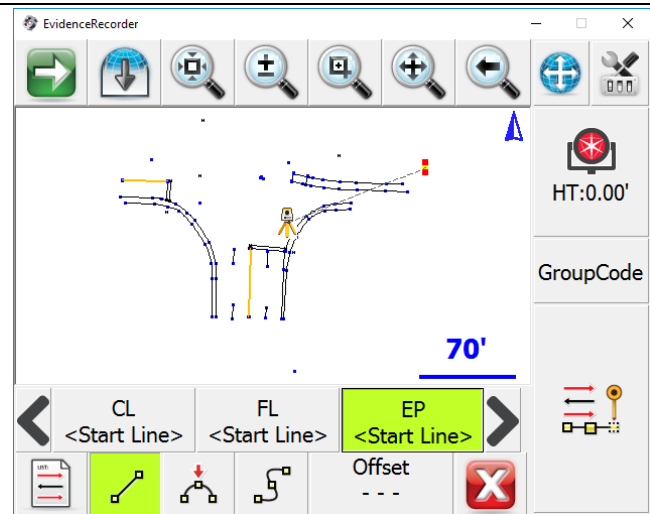
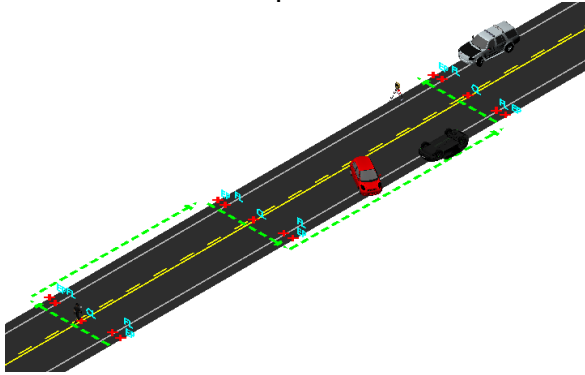
7. Continue following the pattern:





IMS EvidenceRecorder

8. When you get to the last EP description in the list just move up the road and continue the same pattern in reverse:



- 9. If you need to interrupt the pattern to take a sideshot, just pick the "X"
- 10. When you return to Groupcode it will remember where you left off.
- 11. When you're finished using Groupcode just pick the "X"

