

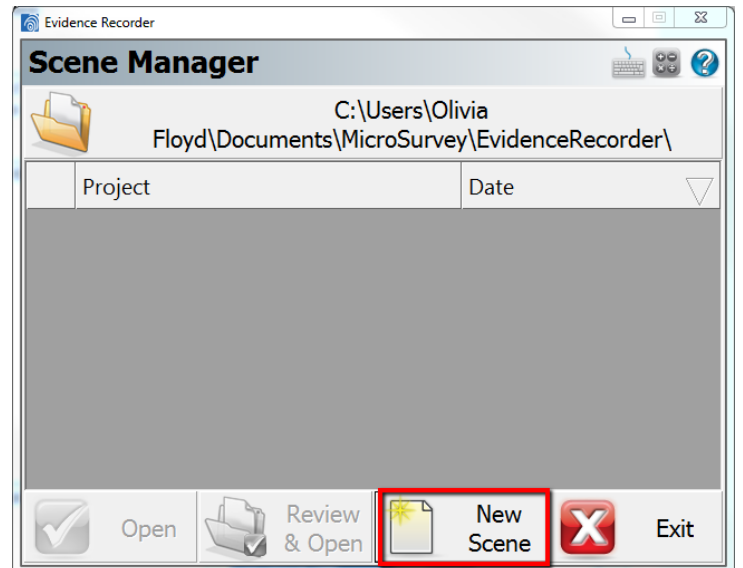


IMS EvidenceRecorder

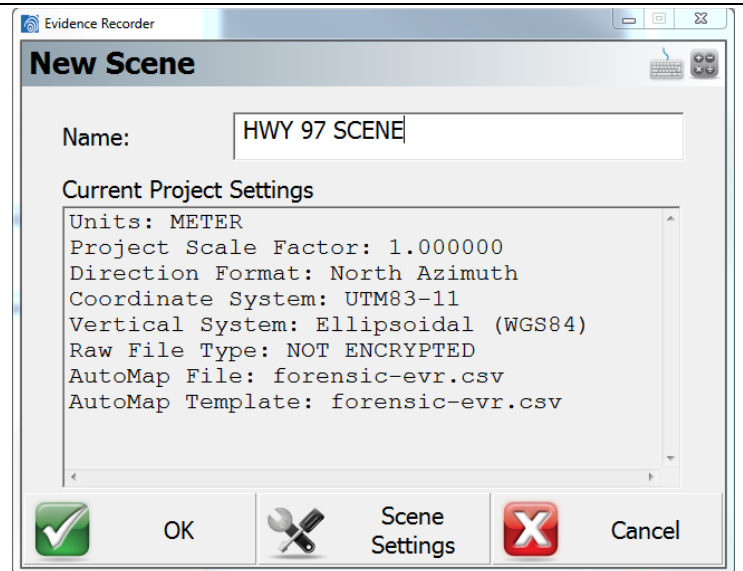
Evidence Recorder Quick Start Guide:

This Workflow Guide outlines the recommended procedure for starting a new Scene with IMS Evidence Recorder.

1. Create a new project by pressing the “New Scene” button in the Scene Manager

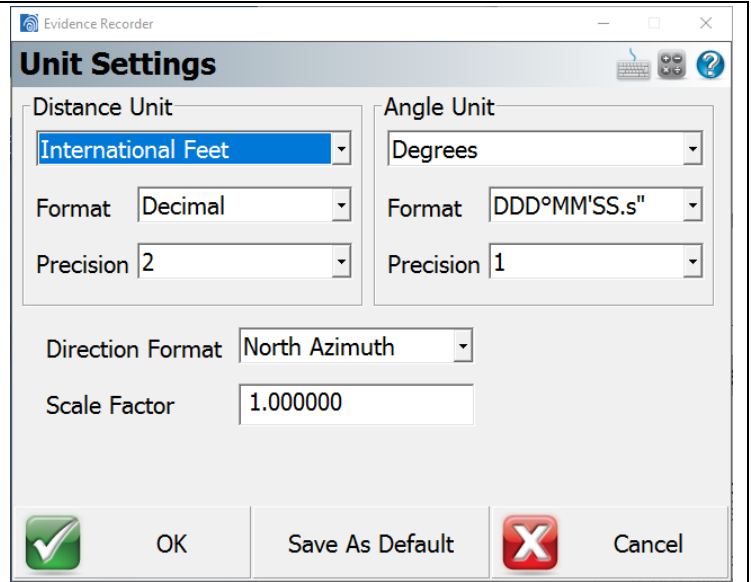


2. Name the project: HWY 97 Scene





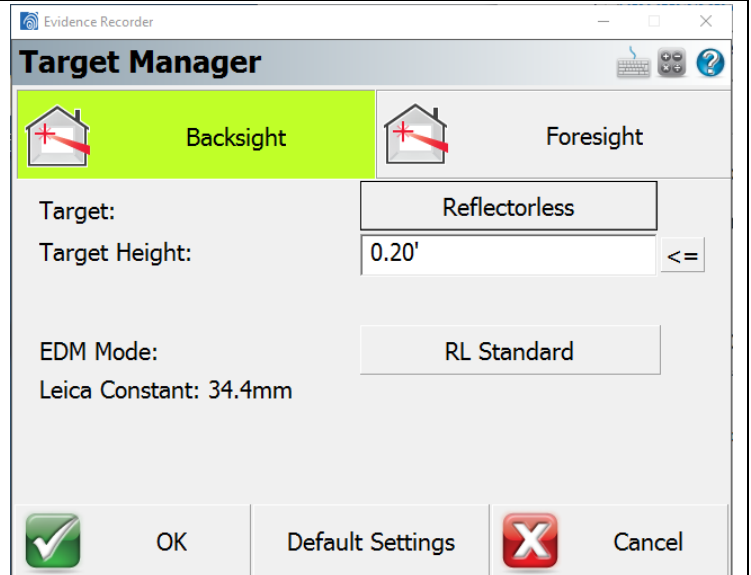
3. Set your distance units to the desired units



4. Confirm height of target for Backsight and Foresight

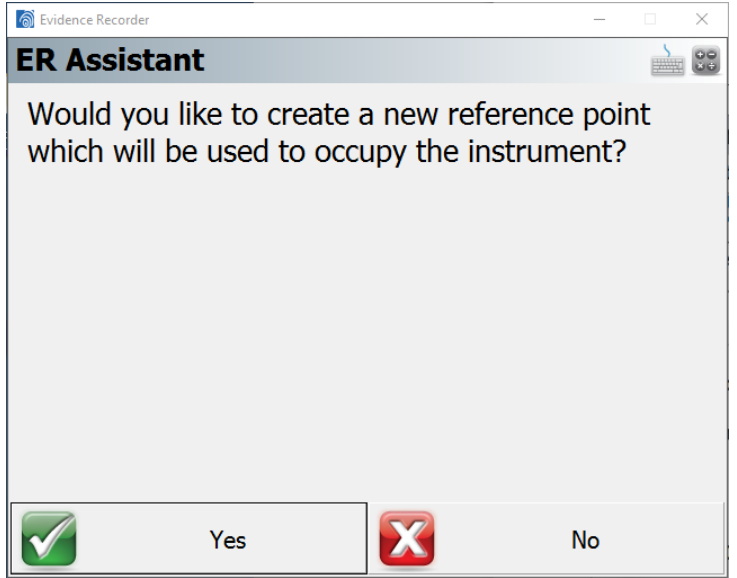


Press "OK"

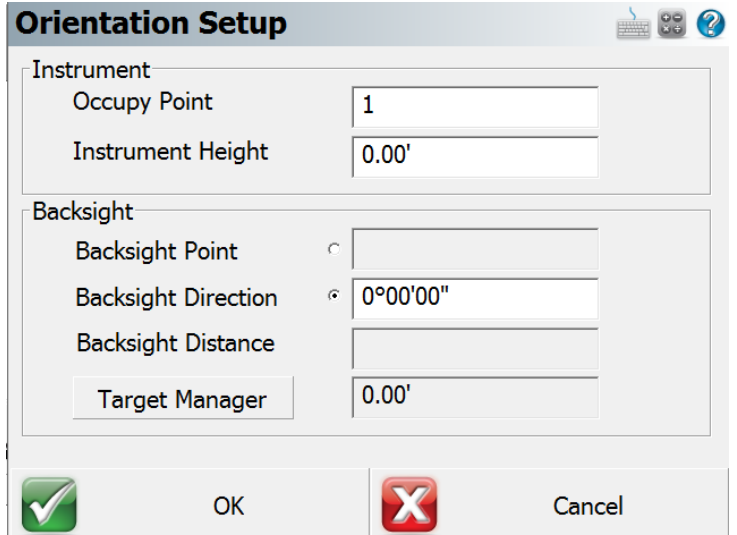




5. Press "Yes" to the ER Assistant.



6. Set up your instrument over the point.
Measure the height of the instrument.
Have backsight direction of 0 selected.





IMS EvidenceRecorder

7. Store the reference point where your total station is currently located.

Store Point

Point ID: 1

Description: RP

X: 100.00'

Y: 100.00'

Z: 100.00'

Store As: User Point

Buttons: Review Measurement, GIS Attributes, Advanced, Enter Note, Store Pnt, Cancel

8. When it asks if you would like to occupy the reference point you just created press "Yes"

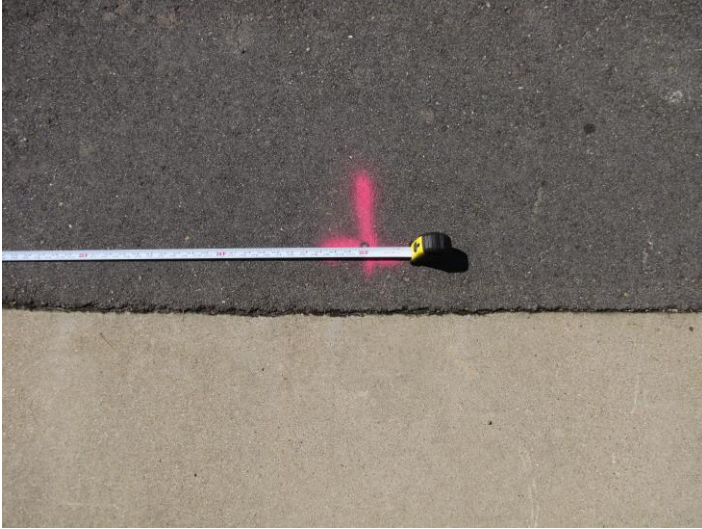
ER Assistant

Would you like to occupy the reference point you just created?

Buttons: Yes, No



9. Take a measurement on the backsight and set the plate reading to 0. Confirm this distance with a measuring tape.



It is also recommended to turn the laser plummet on and permanently mark the point that the instrument is set up on.

10. Store the point observed at the backsight



Evidence Recorder

Orientation Result

Backsight Observations
HA 180°01'50" VA 87°33'01"
SD 9.27' HD 9.26'
HI 4.00' HT 0.20'

Backsight Errors

Calc Horz Dist	N/A	Error	N/A
Calc Elev	N/A	Error	N/A

Plate Setting
Set to Zero 0°00'00"

Accept Observe Again Cancel

Evidence Recorder

Total Station Orientation

Store the point observed at the backsight?

Yes No



11. Store the backsight as Point ID 99 with the description of RM

Evidence Recorder

Store Backsight Point

Point ID: 99

Description: RM List

X: 100.00'

Y: 109.26'

Z: 104.20'

Prism Hgt: 0.20'

Store As: User Point

Review Measurement

GIS Attributes

Advanced

Enter Note

Store Pnt Cancel

12. Now you can take sideshots and continue mapping your scene.